

PRESS RELEASE

RAST 2.5 plus Pin Headers in Surface Mount Technology (SMT)

Schalksmühle, 4 October 2018. Modern printed circuit boards are often realized in highly-productive, budget-friendly Surface Mount Technology (SMT). This system places connectors with other surface mountable components onto imprinted solder paste, followed by reflow soldering.

To safely accommodate connectors with one- and double-sided keying the RAST specialist Lumberg has now added a RAST 2.5 plus pin header in SMT to its delivery program. Lumberg's *plus* range for the RAST system offers double-sided keying which provides for extended keying options compared to one-sided contacts.

The new upright pin header has been specifically designed for Surface Mount Technology (SMT) - a process which is particularly suitable for automated PCB assembly and, depending on the project, is more economical than Through-Hole-Technology (THT). The pin header comes with between 3 and 11 pins. The different materials and contact surfaces cater to higher reflow temperatures and are suited for peak temperatures ranging between -40 and 140 °C. Naturally, the material is glow wire resistant (GWT 750 °C) and therefore also suitable for use in unsupervised devices, as described in certain standards. Pin headers with 2.5 or 5 mm contact spacing are available with both exterior locking and interior locking, which is even suitable for bus cables, and come with a bar feeder or reel. Additionally, the pin header features one or optionally, two positioning spigots for safe orientation. The geometry, mass and center of gravity are of automation-friendly design.

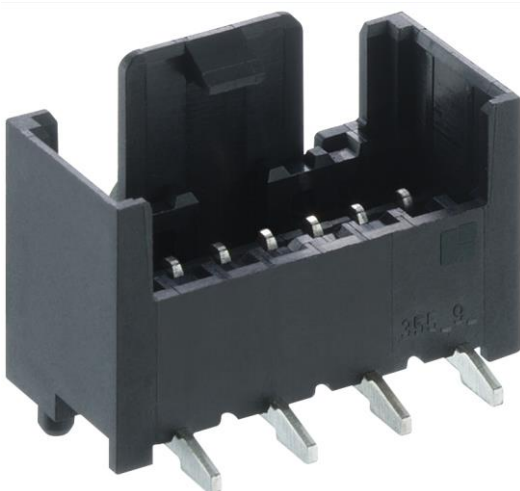
For signal and load currents of up to 4 A at T_{amb} 60 °C the pin header in SMT is designed for a rated voltage of 250 V AC with 2.5 mm spacing, or 500 V AC with 5 mm spacing for an insulation resistance of > 1 giga-ohm, with contact males in CuZn, nickel-plated and tin-plated.

Standard RAST 2.5 connectors in Insulation Displacement Technology from Lumberg's renowned Series 35, such as the top-selling 3521 and naturally also its RAST 2.5 plus 352100 connectors, make for an ideal pin header contact. Compatibility with all marketable RAST 2.5 systems is a given.

Total no. of characters incl. blanks: 2,178

The following media kit is attached to this press release:

Photo 1: LUMBERG_RAST-2.5-Stiftleiste_SMT_355095.jpg



About Lumberg Group:

The Lumberg Group, headquartered in Schalksmühle, Germany, ranks among the leading providers of connector and interconnect systems. Core areas of expertise include R&D, manufacturing and the worldwide sales of electromechanical and mechatronic components. For 85 years now, the Group's skills have broadened from manufacturing connectors and challenging micro-contact elements, to developing complex mechatronic assemblies, to customer-specific engineering and technical design services for all industries. In-depth application expertise led to strong partnerships in the automotive, home appliance, building technology, communications and consumer electronic industries. Family-run in the third generation, the company has a global workforce of around 1,300. Subsidiaries in Europe, America and Asia form a dense sales network. In 2017, the Group's turnover totaled some Euro 136,6 m. Over 20,000 catalog and customized products are proof of the company's efficiency.

www.lumberg.com – www.facebook.com/lumberg.homebase