

PRESS RELEASE

Pluggable Terminal Block in IDT – Unique, Yet Universal

Schalksmühle, 15.07.2014. Quite popular is the use of all kinds of pin headers. For an easy and safe connection of peripheral components, such as pumps or external sensors, often terminal blocks will mate on these pin headers, which are predominantly based on screw clamps. These pluggable terminal blocks allow an easy wiring and convenient connection of the peripheral devices.

A lot different is the production of major devices which are assembled on an industrial scale as any potential for economization must be squeezed out. And no installer will have to take action in the field afterwards. Lumberg now launches its 67-series pluggable terminal block, pitch 5.08 (.200") in IDT. When it comes to efficient processing of pre-assembled terminal blocks, insulation displacement technology (IDT) is head and shoulders to screw clamps. Especially with high volumes and automated production its advantages snowball. Also typical for IDT harnessing: a significant advance in quality, as testing procedures are integrated in-line. And all conductors are prevented from detaching later on, which is occurring occasionally with manually wired screw clamps.

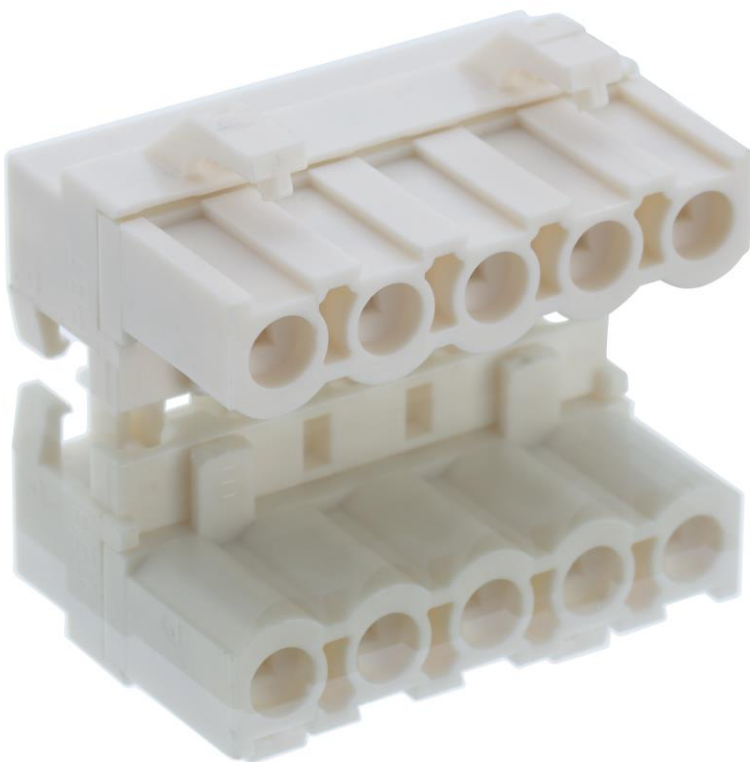
For signal and load currents of up to 6 A the pluggable terminal block 6770 matches many common pin headers available in the market at the same pitch of 5.08 mm. With a 90° or 180° cable departure to the plugging direction, with locking and keying option as well as a test hole the 2 to 7-poles terminal block can be placed consecutively on pin headers without loss of pitch. Being just as reliable, but in semi-automated processing a much faster

alternative, the terminal block 6770 in IDT is the ideal choice for indirect mating on many manufacturers' pin headers. With tin-plated contacts and rated currents of up to 6 A at T_{amb} 70 °C within a temperature range of -25 to +100 °C conductors with a 0.5–0.75 mm² section can be connected; when using an alternative insulation displacement terminal they can be used for diameters of between even 0.2 and 0.38 mm². The maximum insulation diameter is 2.5 mm.

Total no. of characters incl. blanks: 2.112

As media material to this press release attached you will find:

Photo 1: LUMBERG_Pluggable Terminal Block 6770 in Insulation Displacement Technology (IDT)



About Lumberg Group:

The Lumberg Group, headquartered in Schalksmühle, Germany, ranks among the leading providers of connector and interconnect systems. Core areas of expertise include R&D, manufacturing and the worldwide sales of electromechanical and mechatronic components. For 80 years now, the Group's skills have broadened from manufacturing connectors and challenging micro-contact elements, to developing complex mechatronic assemblies, to customer-specific engineering and technical design services for all industries. In-depth application expertise led to strong partnerships in the automotive, home appliance, building technology, communications, consumer electronic and photovoltaic industries. Family-run in the third generation, the company has a global workforce of around 1,000. Subsidiaries in Europe, America and Asia form a dense sales network. In 2014, the Group's turnover totaled some Euro 115m. Over 20,000 catalog and customized products are proof of the company's efficiency. www.lumberg.com