

15

1503 06

## Jack connectors



Jack chassis socket acc. to JIS C 6560 JC35J2B, 3.5 mm, 2 poles/mono, angular version, with break contact, for printed circuit boards

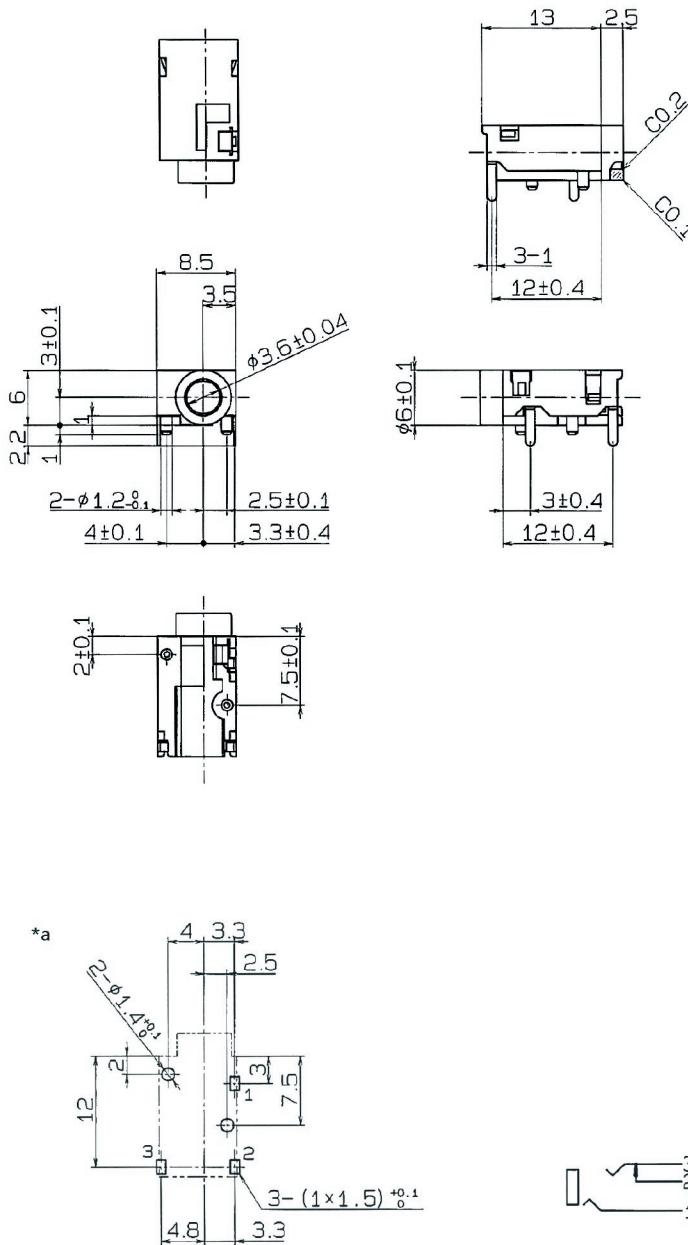
---

State:   Obsolete

---

15

1503 06



#### Environmental conditions

Temperature range -20 °C/+70 °C

#### Materials

Insulating body PA, HB according to UL94  
Contact spring Cu alloy, silver-plated

#### Mechanical data

Mating cycles ≥ 5000  
Insertion force 4-30 N  
Withdrawal force 4-30 N

#### Electrical data (at T<sub>amb</sub> 20 °C)

Contact resistance ≤ 30 mΩ  
Rated current 1 A  
Rated voltage 34 V AC/DC  
Rated impulse voltage 500 V/60 s  
Insulation resistance ≥ 100 MΩ

#### Associated products

Counterparts

☞ 1532 06

☞ KLS 2

☞ KLS 22

☞ WKLS 2

\*a printed circuit board layout, solder side view

15

1503 06

Designation	Pole Number	PU (Pieces)	MDQ (Pieces)
1503 06	2	500	500

**Packaging:**

in bulk, in a cardboard box or a plastic bag