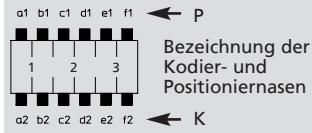


357099

Für diesen Steckverbinder schlägt Lumberg die unten dargestellten Kodierungen vor. Weitere Kodierungen sind auf Anfrage möglich.



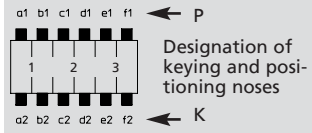
Steckweise indirekt, mit doppel-seitig kodierter Stiftleiste:
 Kodierung durch Kodiernasen am Steckverbinder und entsprechende Öffnungen an der Stiftleiste

Steckweise direkt, auf den Leiter-plattenrand:
 Keine Kodierung möglich

Alle Zeichnungen in Steckrichtung (*) gesehen

357099

For this connector, Lumberg propos-es the keyings listed below. Further keyings are possible on request.



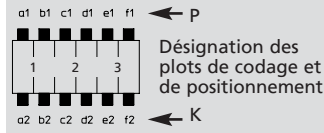
Indirect connection, with double-sided keyed pin header:
 Keying by means of keying noses at the connector and matching gaps at the pin header

Direct connection, with the print-ed circuit board edge:
 No keying feature available

All drawings in view of mating direction (*)

357099

Pour ce connecteur Lumberg propose les codages ci-dessous. Autres codages sont possibles sur demande.



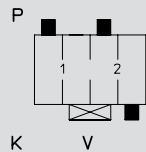
Connexion indirecte, avec réglette à broches codé des deux côtés :
 Codage par plots de codage au connecteur et ouvertures correspondan-tes à la réglette à broches

Connexion directe, avec le board de la carte imprimée :
 Codage impossible

Tous dessins vus dans le sens d'enfi-chage (*)

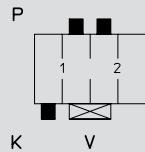
2
 2-polig
 2 poles
 2 pôles

357099 02 K01



Kodierung/keying/codage:
 P a1 c1, K d2, V 1/3

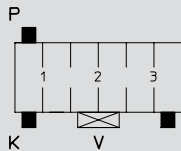
357099 02 K02



Kodierung/keying/codage:
 P b1 c1, K a2, V 1/3

3
 3-polig
 3 poles
 3 pôles

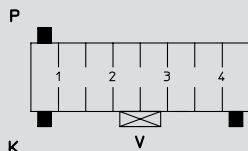
357099 03 K02



Kodierung/keying/codage:
 P a1, K a2 f2, V 2/4

4
 4-polig
 4 poles
 4 pôles

357099 04 K05

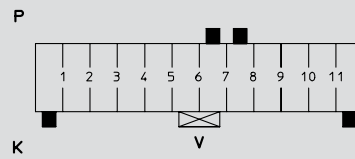


Kodierung/keying/codage:
 P a1, K a2 h2, V 3/5

6

6-polig
6 poles
6 pôles

357099 06 K02

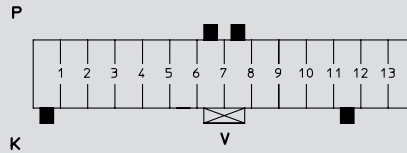


Kodierung/keying/codage:
P g1 h1, K a2 l2, V 5/7

7

7-polig
7 poles
7 pôles

357099 07 K01



Kodierung/keying/codage:
P g1 h1, K a2 l2, V 6/8