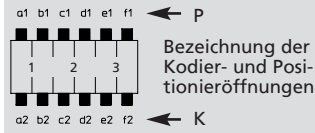


355299

Für diese Stiftleiste schlägt Lumberg die unten dargestellten Kodierungen vor. Weitere Kodierungen sind auf Anfrage möglich.



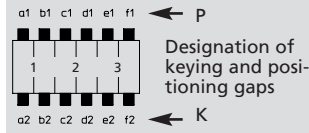
Steckweise indirekt, mit RAST-2,5-Steckverbinder:

Kodierung durch Kodiernasen am Steckverbinder und entsprechende Öffnungen an der Stiftleiste

Alle Zeichnungen in Steckrichtung (*) gesehen

355299

For this pin header, Lumberg proposes the keyings listed below. Further keyings are possible on request.



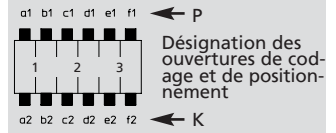
Indirect connection, with RAST 2.5 connector:

Keying by means of keying noses at the connector and matching gaps at the pin header

All drawings in view of mating direction (*)

355299

Pour cette réglette à broches Lumberg propose les codages ci-dessous. Autres codages sont possibles sur demande.



Connexion indirecte, avec connecteur RAST 2,5 :

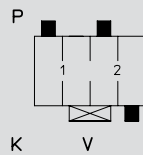
Codage par plots de codage au connecteur et ouvertures correspondantes à la réglette à broches

Tous dessins vus dans le sens d'enfichage (*)

2

2-polig
2 poles
2 pôles

355299 02 K01

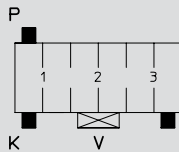


Kodierung/keying/codage:
P a1 c1, K d2, V 1/3

3

3-polig
3 poles
3 pôles

355299 03 K02

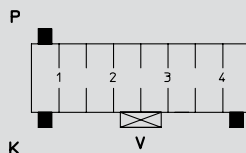


Kodierung/keying/codage:
P a1, K a2 f2, V 2/4

4

4-polig
4 poles
4 pôles

355299 04 K05

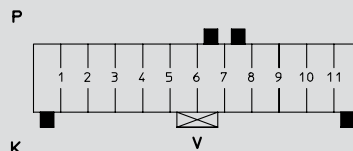


Kodierung/keying/codage:
P a1, K a2 h2, V 3/5

6

6-polig
6 poles
6 pôles

355299 06 K02

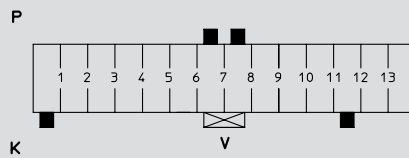


Kodierung/keying/codage:
P g1 h1, K a2 l2, V 5/7

7

7-polig
7 poles
7 pôles

355299 07 K01



Kodierung/keying/codage:
P g1 h1, K a2 l2, V 6/8