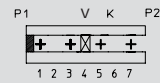

3518

Für diesen Steckverbinder schlägt Lumberg die unten dargestellten Kodierungen vor. Weitere Kodierungen sind auf Anfrage möglich.



K Kodierung
 P Positionierung
 V Verriegelung

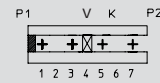
Steckweise direkt, auf den Leiterplattenrand:

Kodierung durch Kodierstege und geschlossene Seitenwände (Positionierung). Die Leiterplatte hat dazu passende Ausnehmungen

Alle Zeichnungen in Steckrichtung (*) gesehen

3518

For this connector, Lumberg proposes the keyings listed below. Further keyings are possible on request.



K keying
 P positioning
 V lock

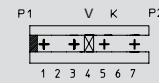
Direct connection, with the printed circuit board edge:

Keying by means of keying ribs and closed sides (positioning). The circuit board has matching reliefs

All drawings in view of mating direction (*)

3518

Pour ce connecteur Lumberg propose les codages ci-dessous. Autres codages sont possibles sur demande.



K codage
 P positionnement
 V verrouillage

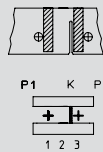
Connexion directe, avec le board de la carte imprimée:

Codage par cloisons de codage et parois latérales fermées (positionnement). La carte imprimée possède des fentes adéquates

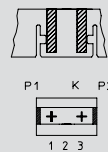
Tous dessins vus dans le sens d'enfichage (*)

2

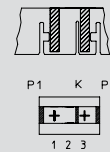
2-polig
 2 poles
 2 pôles

3518 02 K01


Kodierung/keying/codage:
 K2/3

3518 02 K07


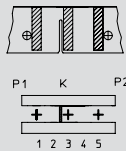
Kodierung/keying/codage:
 P1 P2

3518 02 K08


Kodierung/keying/codage:
 K2/3 P1 P2

3

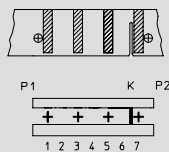
3-polig
 3 poles
 3 pôles

3518 03 K08


Kodierung/keying/codage:
 K2/3

4

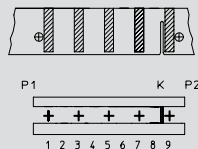
4-polig
 4 poles
 4 pôles

3518 04 K01


Kodierung/keying/codage:
 K6/7

5

5-polig
 5 poles
 5 pôles

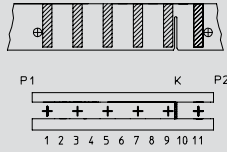
3518 05 K01


Kodierung/keying/codage:
 K8/9

6

6-polig
6 poles
6 pôles

3518 06 K06

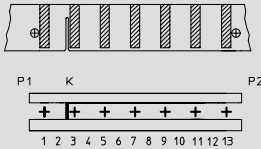


Kodierung/keying/codage:
K9/10

7

7-polig
7 poles
7 pôles

3518 07 K02

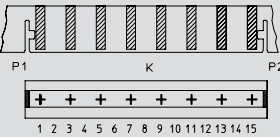


Kodierung/keying/codage:
K2/3

8

8-polig
8 poles
8 pôles

3518 08 K06

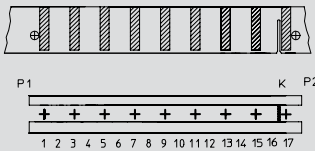


Kodierung/keying/codage:
P1 P2

9

9-polig
9 poles
9 pôles

3518 09 K01

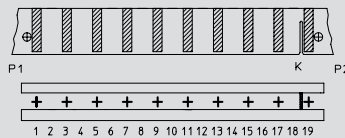


Kodierung/keying/codage:
K16/17

10

10-polig
10 poles
10 pôles

3518 10 K01



Kodierung/keying/codage:
K18/19