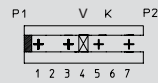

**3516**

Für diesen Steckverbinder schlägt Lumberg die unten dargestellten Kodierungen vor. Weitere Kodierungen sind auf Anfrage möglich.



K Kodierung  
P Positionierung  
V Verriegelung

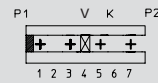
**Steckweise direkt**, auf den Leiterplattenrand:

Kodierung durch Kodierstege und geschlossene Seitenwände (Positionierung). Die Leiterplatte hat dazu passende Ausnehmungen

Alle Zeichnungen in Steckrichtung (\*) gesehen

**3516**

For this connector, Lumberg proposes the keyings listed below. Further keyings are possible on request.



K keying  
P positioning  
V lock

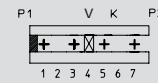
**Direct connection**, with the printed circuit board edge:

Keying by means of keying ribs and closed sides (positioning). The circuit board has matching reliefs

All drawings in view of mating direction (\*)

**3516**

Pour ce connecteur Lumberg propose les codages ci-dessous. Autres codages sont possibles sur demande.



K codage  
P positionnement  
V verrouillage

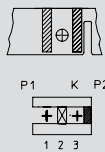
**Connexion directe**, avec le board de la carte imprimée:

Codage par cloisons de codage et parois latérales fermées (positionnement). La carte imprimée possède des fentes adéquates

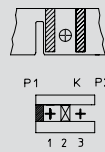
Tous dessins vus dans le sens d'enfichage (\*)

**2**

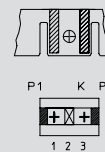
2-polig  
2 poles  
2 pôles

**3516 02 K03**


Kodierung/keying/codage:  
P2 V2

**3516 02 K04**


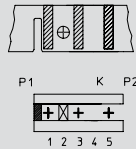
Kodierung/keying/codage:  
P1 V2

**3516 02 K05**


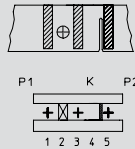
Kodierung/keying/codage:  
P1 P2 V2

**3**

3-polig  
3 poles  
3 pôles

**3516 03 K05**


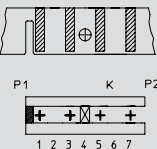
Kodierung/keying/codage:  
P1 V2

**3516 03 K13**


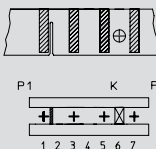
Kodierung/keying/codage:  
K4/5 V2

**4**

4-polig  
4 poles  
4 pôles

**3516 04 K04**


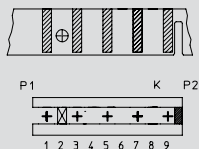
Kodierung/keying/codage:  
P1 V4

**3516 04 K14**


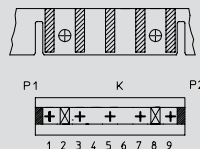
Kodierung/keying/codage:  
K1/2 V6

**5**

5-polig  
5 poles  
5 pôles

**3516 05 K02**


Kodierung/keying/codage:  
P2 V2

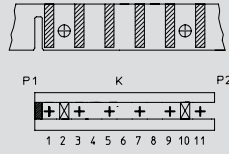
**3516 05 K05**


Kodierung/keying/codage:  
P1 P2 V2 V8

# 6

6-polig  
6 poles  
6 pôles

## 3516 06 K04

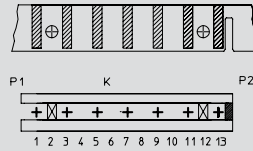


Kodierung/keying/codage:  
P1 V2 V10

# 7

7-polig  
7 poles  
7 pôles

## 3516 07 K07

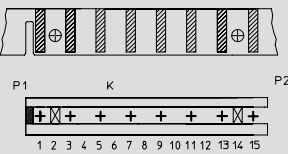


Kodierung/keying/codage:  
P2 V2 V12

# 8

8-polig  
8 poles  
8 pôles

## 3516 08 K04

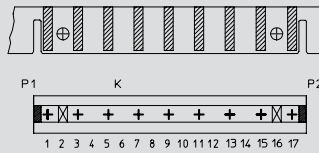


Kodierung/keying/codage:  
P1 V2 V14

# 9

9-polig  
9 poles  
9 pôles

## 3516 09 K06

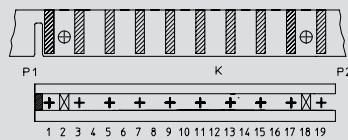


Kodierung/keying/codage:  
P1 P2 V2 V16

# 10

10-polig  
10 poles  
10 pôles

## 3516 10 K04



Kodierung/keying/codage:  
P1 V2 V18