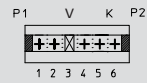

3515

Für diesen Steckverbinder schlägt Lumberg die unten dargestellten Kodierungen vor. Weitere Kodierungen sind auf Anfrage möglich.



K Kodierung
P Positionierung
V Verriegelung

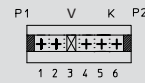
Steckweise direkt, auf den Leiterplattenrand:

Kodierung durch Kodierstege und geschlossene Seitenwände (Positionierung). Die Leiterplatte hat dazu passende Ausnehmungen

Alle Zeichnungen in Steckrichtung (*) gesehen

3515

For this connector, Lumberg proposes the keyings listed below. Further keyings are possible on request.



K keying
P positioning
V lock

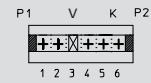
Direct connection, with the printed circuit board edge:

Keying by means of keying ribs and closed sides (positioning). The circuit board has matching reliefs

All drawings in view of mating direction (*)

3515

Pour ce connecteur Lumberg propose les codages ci-dessous. Autres codages sont possibles sur demande.



K codage
P positionnement
V verrouillage

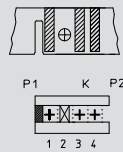
Connexion directe, avec le board de la carte imprimée:

Codage par cloisons de codage et parois latérales fermées (positionnement). La carte imprimée possède des fentes adéquates

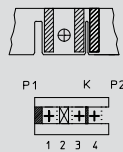
Tous dessins vus dans le sens d'enfichage (*)

3

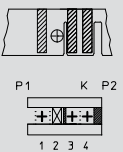
3-polig
3 poles
3 pôles

3515 03 K04


Kodierung/keying/codage:
P1 V2

3515 03 K05


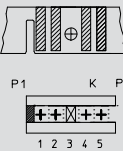
Kodierung/keying/codage:
P1 K3/4 V2

3515 03 K07


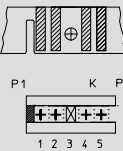
Kodierung/keying/codage:
K2/3 P2 V2

4

4-polig
4 poles
4 pôles

3515 04 K04


Kodierung/keying/codage:
P1 V3

3515 05 K04


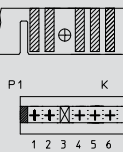
Kodierung/keying/codage:
P1 V3

3515 05 K09

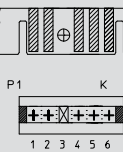

Kodierung/keying/codage:
P1 P2 V3

5

5-polig
5 poles
5 pôles

3515 06 K06


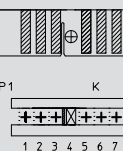
Kodierung/keying/codage:
K3/4 V4

3515 06 K18


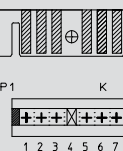
Kodierung/keying/codage:
P1 P2 V4

6

6-polig
6 poles
6 pôles

3515 06 K06


Kodierung/keying/codage:
K3/4 V4

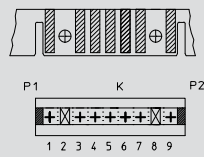
3515 06 K18


Kodierung/keying/codage:
P1 P2 V4

7

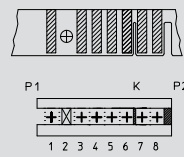
7-polig
7 poles
7 pôles

3515 07 K05



Kodierung/keying/codage:
P1 P2 V2 V8

3515 07 K06

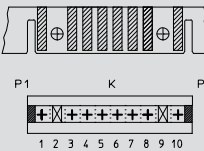


Kodierung/keying/codage:
K6/7 P2 V2

8

8-polig
8 poles
8 pôles

3515 08 K13

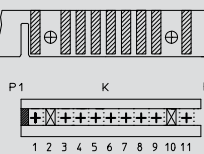


Kodierung/keying/codage:
P1 P2 V2 V9

9

9-polig
9 poles
9 pôles

3515 09 K04

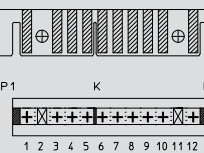


Kodierung/keying/codage:
P1 V2 V10

10

10-polig
10 poles
10 pôles

3515 10 K05

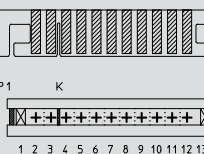


Kodierung/keying/codage:
K5/6 P1 P2 V2 V11

11

11-polig
11 poles
11 pôles

3515 11 K10

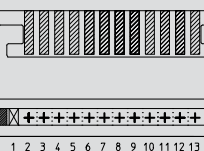


Kodierung/keying/codage:
K3/4 P1 P2 V1 V13

12

12-polig
12 poles
12 pôles

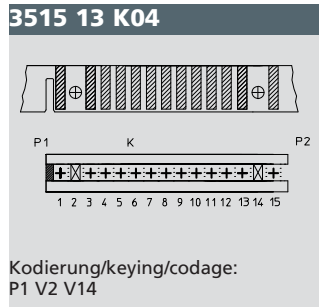
3515 12 K08



Kodierung/keying/codage:
P1 P2 V1 V14

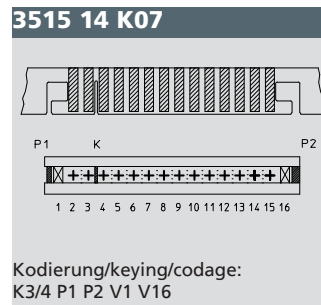
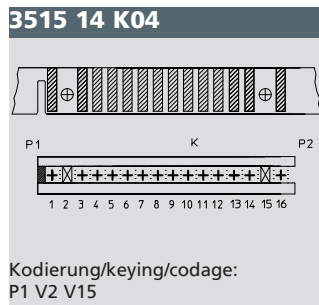
13

13-polig
13 poles
13 pôles



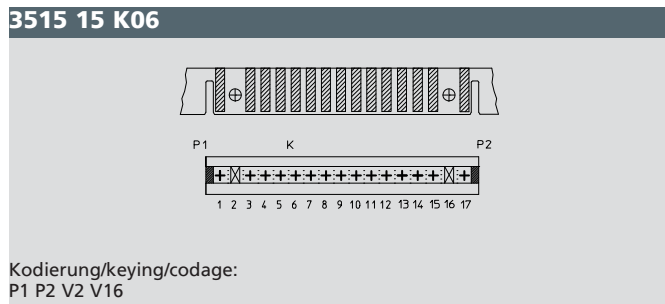
14

14-polig
14 poles
14 pôles



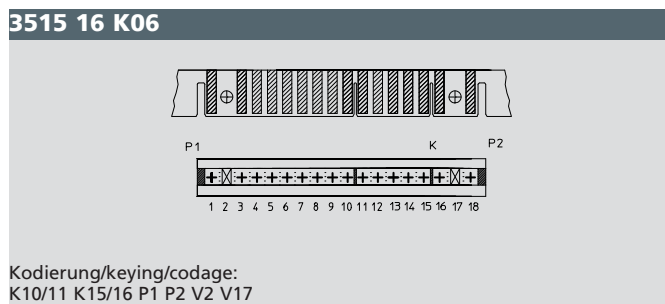
15

15-polig
15 poles
15 pôles



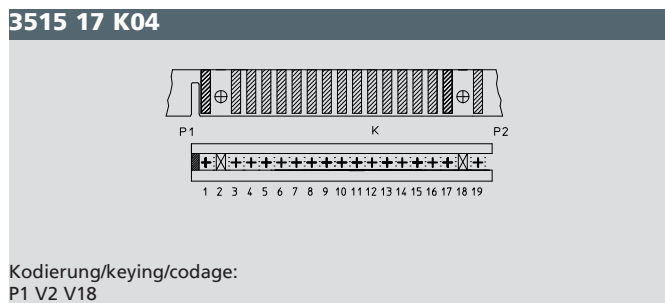
16

16-polig
16 poles
16 pôles



17

17-polig
17 poles
17 pôles



18

18-polig
18 poles
18 pôles

