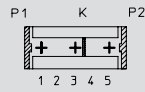

3513

Für diesen Steckverbinder schlägt Lumberg die unten dargestellten Kodierungen vor. Weitere Kodierungen sind auf Anfrage möglich.



K Kodierung
P Positionierung

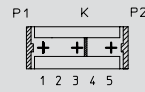
Steckweise direkt, auf den Leiterplattenrand:

Kodierung durch Kodierstege und geschlossene Seitenwände (Positionierung). Die Leiterplatte hat dazu passende Ausnehmungen

Alle Zeichnungen in Steckrichtung (*) gesehen

3513

For this connector, Lumberg proposes the keyings listed below. Further keyings are possible on request.



K keying
P positioning

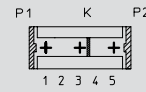
Direct connection, with the printed circuit board edge:

Keying by means of keying ribs and closed sides (positioning). The circuit board has matching reliefs

All drawings in view of mating direction (*)

3513

Pour ce connecteur Lumberg propose les codages ci-dessous. Autres codages sont possibles sur demande.



K codage
P positionnement

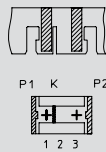
Connexion directe, avec le board de la carte imprimée:

Codage par cloisons de codage et parois latérales fermées (positionnement). La carte imprimée possède des fentes adéquates

Tous dessins vus dans le sens d'enfichage (*)

2

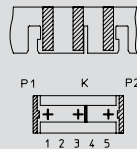
2-polig
2 poles
2 pôles

3513 02 K06


Kodierung/keying/codage:
K1/2 P1 P2

3

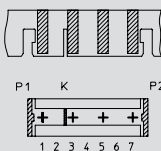
3-polig
3 poles
3 pôles

3513 03 K11


Kodierung/keying/codage:
K3/4 P1 P2

4

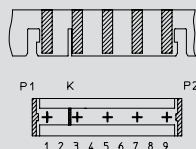
4-polig
4 poles
4 pôles

3513 04 K10


Kodierung/keying/codage:
K2/3 P1 P2

5

5-polig
5 poles
5 pôles

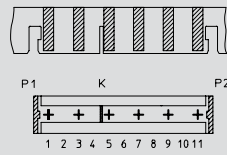
3513 05 K13


Kodierung/keying/codage:
K2/3 P1 P2

6

6-polig
6 poles
6 pôles

3513 06 K07

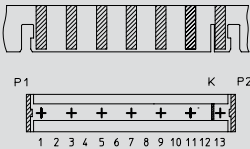


Kodierung/keying/codage:
K4/5 P1 P2

7

7-polig
7 poles
7 pôles

3513 07 K11

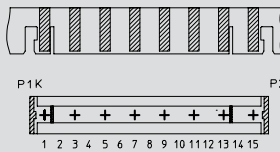


Kodierung/keying/codage:
K12/13 P1 P2

8

8-polig
8 poles
8 pôles

3513 08 K07

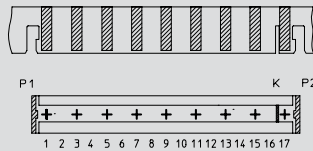


Kodierung/keying/codage:
K1/2 K13/14 P1 P2

9

9-polig
9 poles
9 pôles

3513 09 K

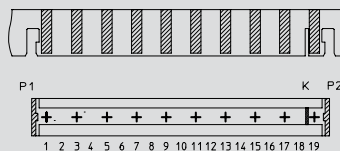


Kodierung/keying/codage:
K16/17 P1 P2

10

10-polig
10 poles
10 pôles

3513 10 K



Kodierung/keying/codage:
K18/19 P1 P2