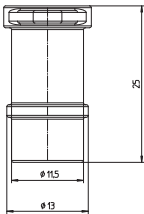
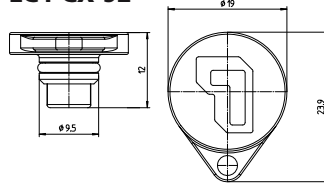


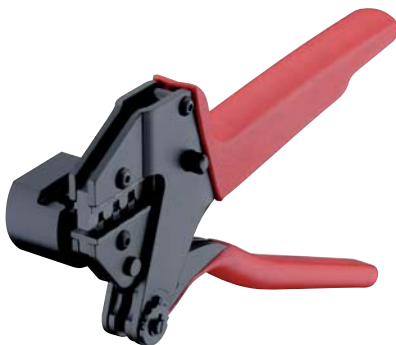

LC4-CX 91

LC4-CX 92


Designation	Description
LC4-CX 91	for sockets
LC4-CX 92	for plugs

Package unit: 100 pieces in a cardboard box



Designation	Description
LC4-CX 93	unlocking tool, wrench



Designation	Description
LC4-CX CZK48	crimp tool

LC4-CX 91
LC4-CX 92

Protective cap for LC4® photovoltaic connectors
 LC4-CX 91: for sockets
 LC4-CX 92: for plugs

1. Materials

Cap	PPE/PS
Seal	NBR

LC4-CX 93

Unlocking tool for LC4® photovoltaic connectors IT, also wrench for field-attachable connectors and chassis receptacles LC3-CP and LC4-CP

LC4-CX CZK48

Manual crimp tool for termination of LC4® photovoltaic connectors with crimp contacts, with stripper

1. Range of applications

Photovoltaic connectors	LC4-CP 1..., LC4-CP 3...
Connectable conductors crimp terminal	
Photovoltaic cable, double-insulated ¹	
Section	2.5 mm ² (AWG 14)
	4.0 mm ² (AWG 12)
	6.0 mm ² (AWG 10)

2. Features

Application	low-volume production, installation, repair
Stroke capacity	ca. 240/h

3. Dimensions

Dimensions (H x W x D)	50 mm x 95 mm x 205 mm
Weight	ca. 0.7 kg

¹ wire construction preferably according to IEC 60228 class 5, otherwise crimp connection must be tested